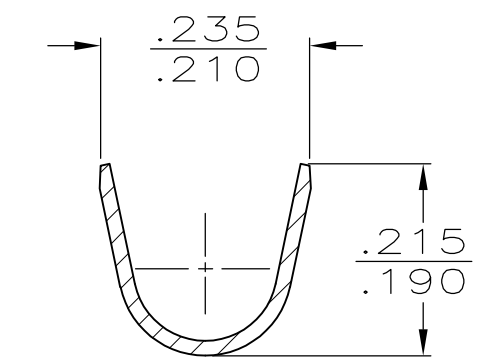
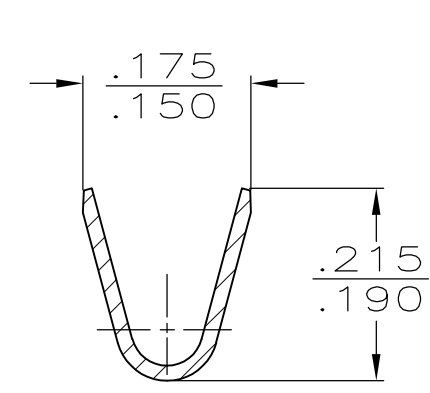
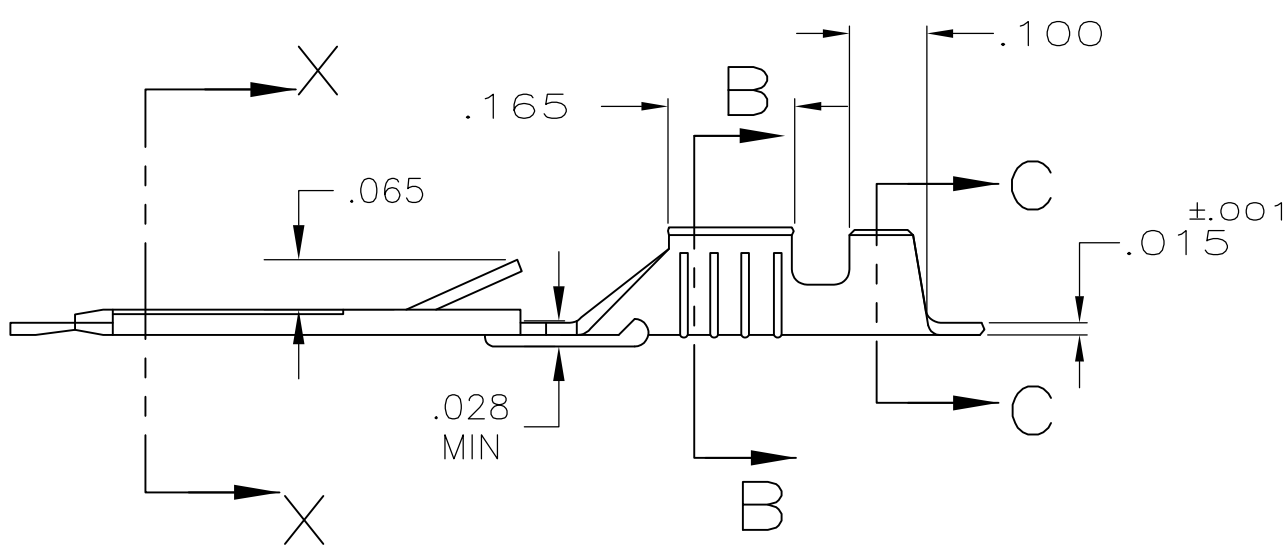
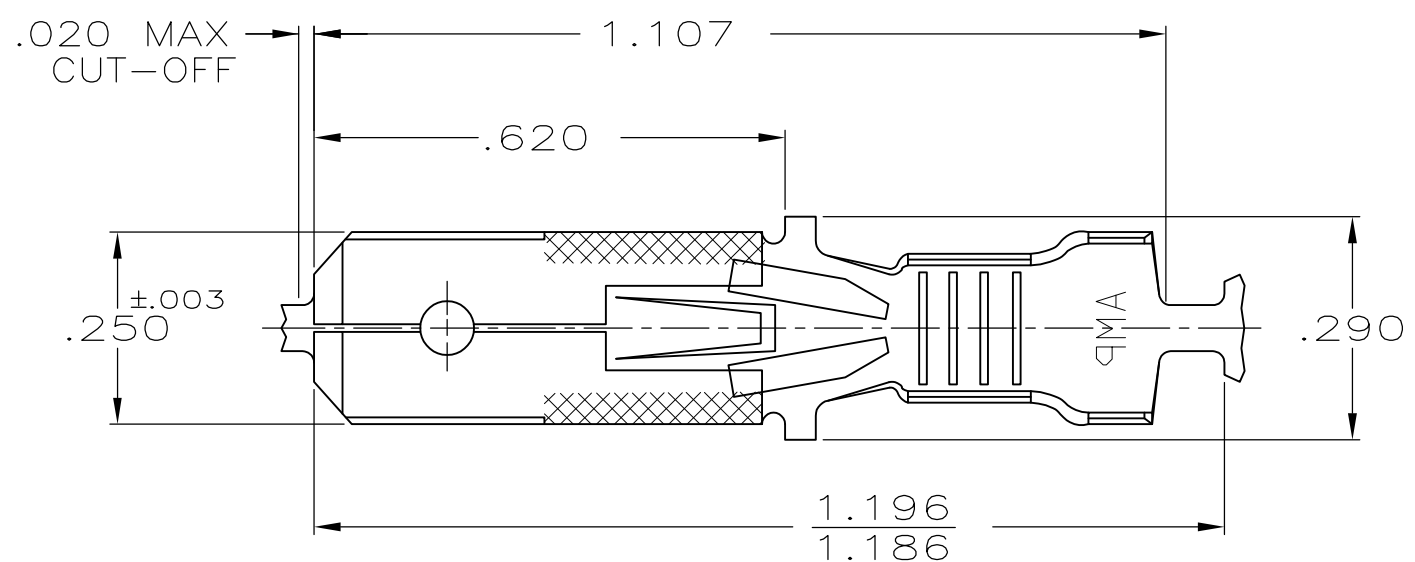
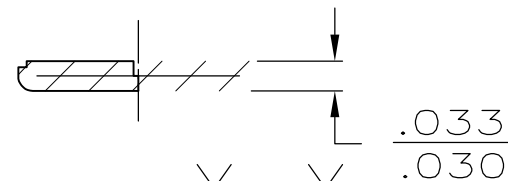


THIS DRAWING IS UNPUBLISHED. RELEASED FOR PUBLICATION
 © COPYRIGHT - By - ALL RIGHTS RESERVED.

LOC	DIST	REVISIONS			
P	LTR	DESCRIPTION	DATE	DWN	APVD
AF	50	W	REVISED PER ECR-13-005733	28AUG2013	KH PD



- 1 CONTINUOUS STRIP ON REELS
- 2 WIRE SIZE IS #14-#10 AWG
- 3 INSULATION RANGE IS .120-.170 DIA
- △4 FOREIGN PRODUCTION ONLY
- △5 .000080 MIN TIN OVER .000100 MIN COPPER UNDERPLATE OR OPTIONAL .000050 MIN NICKEL UNDERPLATE.
- △6 PRELIMINARY - NOT FOR PRODUCTION

OBSOLETE	△5	△6	60701-4
	PRE-TIN	△4	60701-3
	-	△6	60701-2
	TIN		60701-1
	FINISH		PART NO

THIS DRAWING IS A CONTROLLED DOCUMENT.		DWN	JR RUTH	1/31/91	STE TE Connectivity		
DIMENSIONS: INCHES		CHK	MS FEHER	1/31/91			
TOLERANCES UNLESS OTHERWISE SPECIFIED:		APVD	J GILLESPIE	1/31/91	NAME		
0 PLC ± -		PRODUCT SPEC		TAB, FASTIN-FASTON, .250 SERIES			
1 PLC ± -		APPLICATION SPEC		SIZE			
2 PLC ± -		MATERIAL		CAGE CODE			
3 PLC ± .015		FINISH		DRAWING NO			
4 PLC ± -		SEE TABLE		RESTRICTED TO			
ANGLES ± -		CUSTOMER DRAWING		A300779			
MATERIAL		BRASS		G-60701			
FINISH		SCALE		SHEET			
SEE TABLE		4:1		1 OF 1			
		REV		W			